

**THE SOCIETY
OF HISPANIC
PROFESSIONAL
ENGINEERS**

Boston Chapter

Jeizel Hernandez
Interim President and
Treasurer

Netty Nina
VP, Outreach

Krogen Carreño
VP, Corporate
Partnerships

Darryl Sterling
VP, Strategy and
Operations

Nancy Alvarado
Director, Business
Development

Tomas Maldonado
Director, Membership



Society of Hispanic Professional Engineers, Boston Chapter

GENERAL MEETING

April 21, 2011
Google, Inc.
5 Cambridge Center
Cambridge, MA

Contents



- Who are we?
- What value can we provide to you?
- How are we going to do it?
- How to become a member?

Contents



- Who are we?

- What value can we provide to you?

- How are we going to do it?

- How to become a member?

What is SHPE National?



- The Society of Hispanic Professional Engineers (SHPE) was founded in Los Angeles, California in 1974
- The objective was to form a national organization of professional engineers to serve as role models in the Hispanic community
 - Committed to enhancing the position of Latinos in science, technology, engineering and math (STEM) with a strong and talented workforce
- The concept of Networking was the key basis for the organization
 - Develop a network that would grow to encompass the nation as well as reach countries outside the United States
- SHPE National has more than 300 chapters across the country and 10,000 members

SHPE National is organized by Regions and Chapters



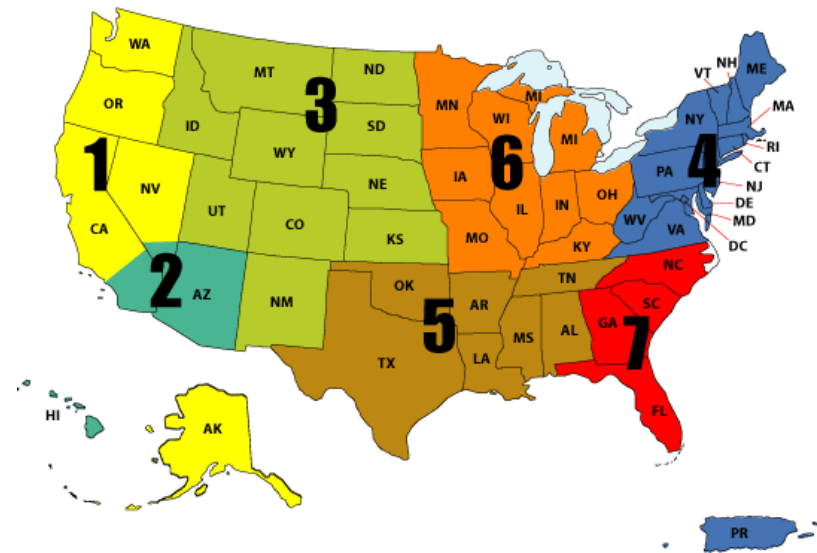
- The Boston chapter is in Region 4

- As of April 5, 2011, in Region 4 there were:

- 14 professional chapters with 392 members
- 65 university chapters with 2,329

- 25% of SHPE National members are in Region 4

Regional Map



There are 196 members of SHPE in the Boston area



**Society of Hispanic Professional Engineers
Boston Chapter**



*Over 300 non-member professionals have
attended SHPE Boston events over the last year*

What is SHPE Boston?



- **Mission Statement**
 - Enable Latinos in the Boston area to pursue, obtain and develop successful careers with top engineering-based companies
 - Collaborate with its corporate partners to provide professional and career development resources to our members
 - Promote STEM education

- **Vision Statement**
 - To be the premier organization in the Boston area for science- and engineering-based companies to recruit and retain Latino talent
 - To create the next generation of Latino leaders in engineering-based companies
 - To create a model for STEM educational outreach that is a successful example for the entire U.S.

Contents



- Who are we?

- What value can we provide to you?

- How are we going to do it?

- How to become a member?

Build Your Network through SHPE National



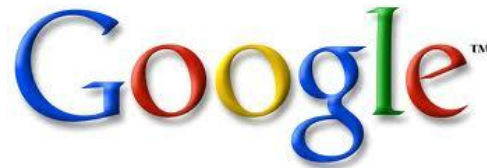
Attend SHPE National Events



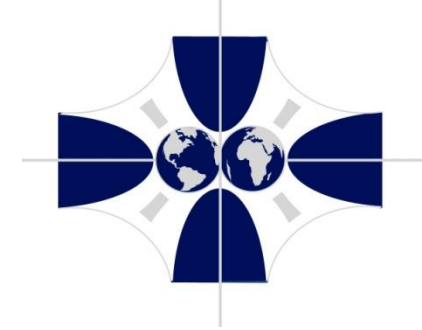
- SHPE Conference
 - The largest technical and career conference for Hispanics/Latinos in the country
 - Attracts over 5,000 engineering professionals, students and corporate representatives
 - Next conference: Anaheim, CA Oct. 26 to Oct 30, 2011
- SHPE National Institute for Leadership Advancement (NILA)
 - NILA is exclusively designed to provide students and professional chapter executive board members with the resources for leadership and chapter development
- SHPE Regional Leadership Development Conference
 - SHPE stages regional leadership development conferences on a yearly basis for the leadership of the SHPE student chapters to improve their organizational, managerial, and technical skills



Build Your Network through SHPE Boston



Attend SHPE Boston Events— Tentative Schedule for 2011



- May
 - SHPE-NSHMBA Networking Event

- June
 - Deloitte Impact Day
 - Latino Professionals of Boston Event

- August
 - Welcome Back Student Member Picnic

- September
 - Hispanic Heritage Month Celebration
 - Featuring “Networking for Engineers” presented by Diane Darling

- October
 - Resume Review and Development Workshops

- December
 - SHPE Boston X-Mas Party

Contents



- Who are we?

- What value can we provide to you?

- How are we going to do it?

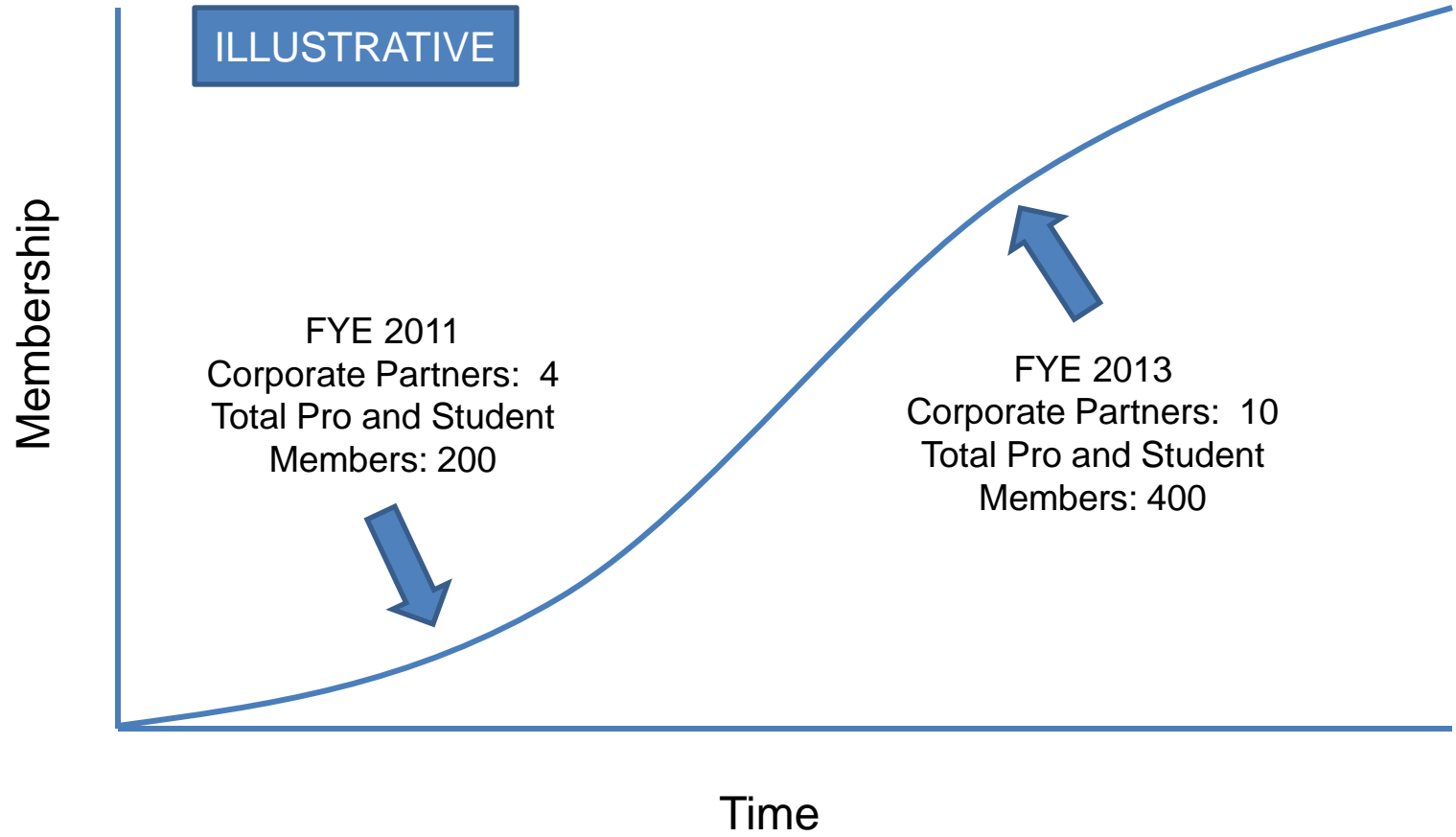
- How to become a member?

What's Special about the Region?



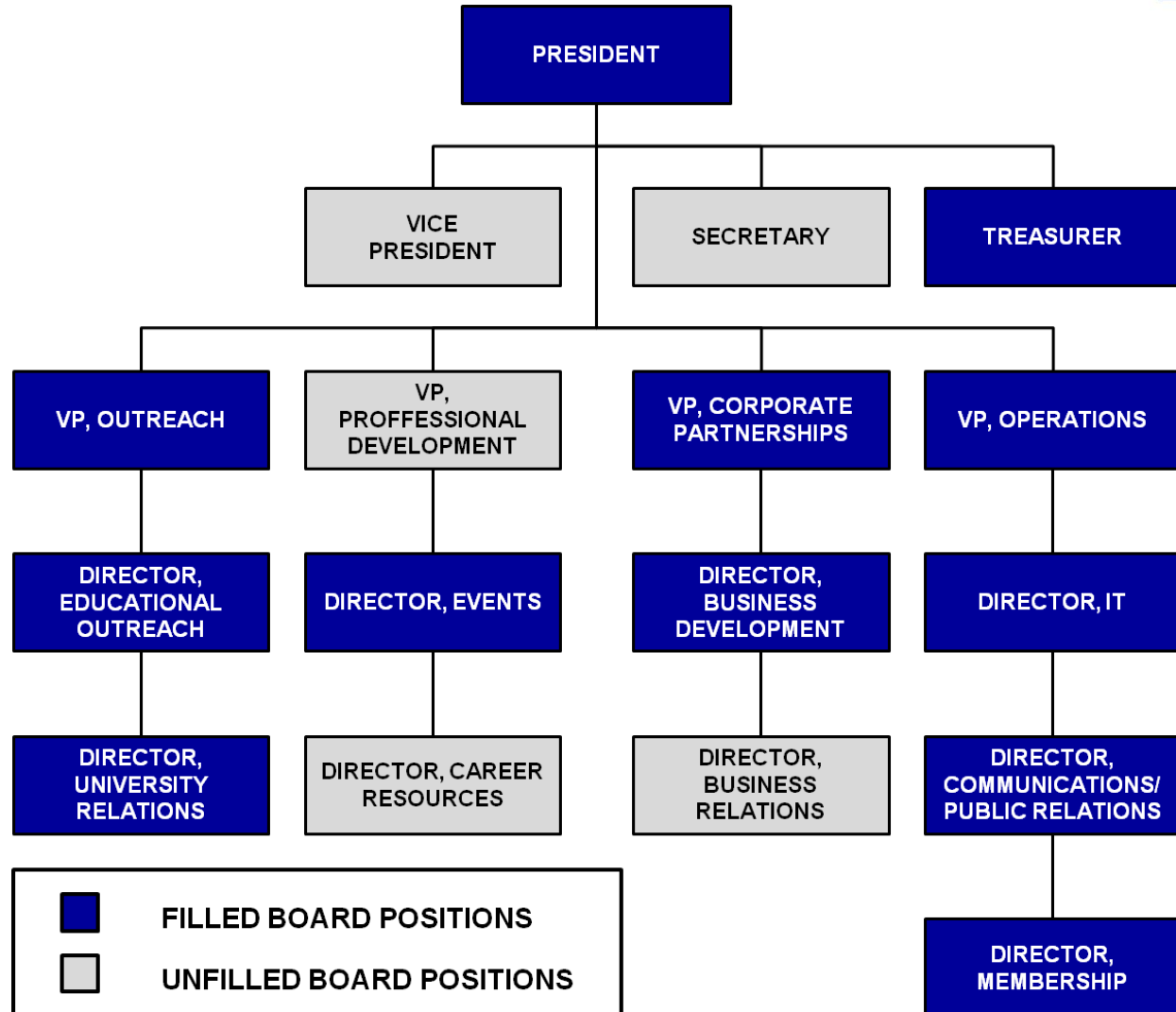
- **Latino Population**
 - The Hispanic population in NE will increase from 11.9% in 2010 to 17.0% in 2025, representing 50% increase (U.S. Census)
- **Engineering Education**
 - There are approximately 168 universities in the NE: 22 of which offer standard engineering disciplines, 13 offer limited/specialized engineering programs (I counted)
- **Engineering Pro Network**
 - The Massachusetts IT industry is home to 10,300 firms
 - In December 2009, high-tech companies in New England employed over 500,000 people

We Want to Aggressively Build our Membership Base



We want to know who our members and what events they want to build our activity agenda

We have Built the Board Structure to Do It



We will Provide Value by Building Online Networking Tools



- We launched our chapter website in May 2010
 - www.shpeboston.org



- We are building a member portal, including:
 - Membership Directory
 - Job postings
 - Resume Database/talent acquisition



Ning is the world's largest platform to create powerful, custom social websites. SHPE will use Ning to create social experiences that create member value.

Contents



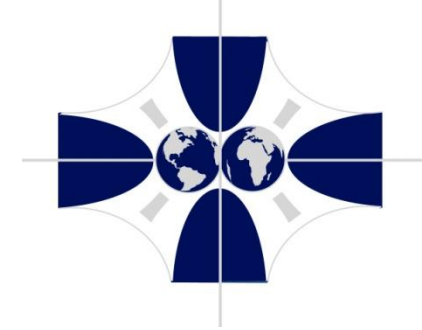
- Who are we?

- What value can we provide to you?

- How are we going to do it?

- How to become a member?

Membership Levels and the Colored Dots...



Type of Membership	Annual Dues	Description
Professional Member	\$45	<ul style="list-style-type: none"> • Holds an engineering-in-training or a bachelor's degree in any engineering field • 6 years experience in engineering or in a STEM educational fields
Lifetime Member	\$500	<ul style="list-style-type: none"> • Same as Professional Member
Associate Member	\$35	<ul style="list-style-type: none"> • Non-engineering professionals working for science- and engineering-based companies
Lifetime Associate Member	\$400	<ul style="list-style-type: none"> • Same as Associate Member
Graduate Student Member	\$15	<ul style="list-style-type: none"> • Enrolled in a curriculum leading to a Masters or PhD in science and engineering
Student Members	\$5	<ul style="list-style-type: none"> • Enrolled in a curriculum leading to any degree in science and engineering
Recent Graduate Member	FREE	<ul style="list-style-type: none"> • Student members in transition to professional membership
SHPE + SWE	\$110 + \$20	<ul style="list-style-type: none"> • Joint membership for individuals who want to be a part of SWE and SHPE

Where to go?



- Sign up now!
 - Where is Tomas?

- SHPE Boston Website
 - www.shpeboston.org

- SHPE National Website
 - www.shpe.org

**THE SOCIETY
OF HISPANIC
PROFESSIONAL
ENGINEERS**

Boston Chapter

Jeizel Hernandez
Interim President and
Treasurer

Netty Nina
VP, Outreach

Krogen Carreño
VP, Corporate
Partnerships

Darryl Sterling
VP, Strategy and
Operations

Nancy Alvarado
Director, Business
Development

Tomas Maldonado
Director, Membership



THANK YOU!